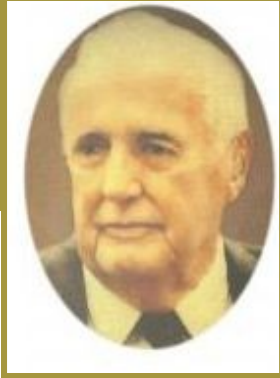


Our Heritage

Locations



Charles D. Keefe Sr.
1921—1997



Cambridge

Arlington



Keefe Funeral Homes, serving Arlington, Cambridge and the surrounding area for more than 60 years.

For more than 60 years Arlington, Cambridge and the surrounding communities have appreciated the professional services offered by the Keefe Funeral Home family and staff.

We are committed to continuing the family tradition of our founder, Charles D. Keefe Sr., and we are proud to continue to be family owned and independently operated by Charles D. Keefe Jr., Chad Keefe, and Timothy Keefe.

Cambridge Location:

*2175 Massachusetts Avenue
Cambridge, MA 02140
Phone (617) 547-5544*

Arlington Location:

*5 Chestnut Street
Arlington, MA 02474
Phone (781) 648-5544*

www.keefefuneralhome.com

info@keefefuneralhome.com

“We are grateful for the confidence and trust families have placed in us and are committed to meeting the continually changing needs of our community.”

-The Keefe Family

Our Services

Pre Plan - Make Your Wishes Known

Our Merchandise

Traditional Visitation



*Traditional
Funeral
Services*



Memorial Services

Direct Burial and Cremation



With preplanning, families find peace of mind in knowing that the funeral reflects what their loved one wanted. It also gives them peace of mind to not have to make important decisions at a stressful time.



- *Cremation Urns*
- *Life Tribute DVD's*
- *Memorial Stationary*

- *Keepsakes*
- *Outer Burial Containers*
- *Caskets*

Our caring and knowledgeable staff can help guide you through the many details and decisions that need to be made. Put your trust in us to make this experience as comfortable and compassionate as possible.

Preplanning offers both emotional and financial security for you and your family members.

Call today to schedule an appointment to find out if preplanning is right for you.

